

## TOPIC HIGHLIGHTS

Hans Gregersen, Professor, Series Editor

# On the mechanical behavior of the human biliary system

Xiaoyu Luo, Wenguang Li, Nigel Bird, Swee Boon Chin, NA Hill, Alan G Johnson

Xiaoyu Luo, NA Hill, Department of Mathematics, University of Glasgow, Glasgow, G12 8QW, United Kingdom

Wenguang Li, Swee Boon Chin, Department of Mechanical Engineering, University of Sheffield, Sheffield, S1 3JD, United Kingdom

Nigel Bird, Alan G Johnson, Academic Surgical Unit, Royal Hallamshire Hospital, Sheffield, S10 2JF, United Kingdom

Correspondence to: Dr. Xiaoyu Luo, Department of Mathematics, University of Glasgow, Glasgow, G12 8QW, United Kingdom. x.y.luo@maths.gla.ac.uk

Telephone: +44-141-3304746 Fax: +44-141-3304111

Received: 2006-12-11 Accepted: 2007-02-06

*Gastroenterol* 2007; 13(9): 1384-1392

<http://www.wjgnet.com/1007-9327/13/1384.asp>

## INTRODUCTION

The human biliary system consists of the gallbladder, the cystic duct, common bile duct and the sphincter of Oddi. The gallbladder is a thin-walled, pear-shaped sac and generally measures 7-10 cm in length and about 3 cm in width. This muscular sac is located in a fossa in the posterior of the right lobe of the liver. The average storage capacity of a gallbladder is about 20-30 mL. Bile, the liquid that flows in the biliary system, is composed of three major components: cholesterol, bile salts, and bilirubin. When the gallbladder is not functioning properly, the components of the bile are supersaturated leading to the formation of solid crystals, called gallstones.

Archaeologists have found human gallstones originating from the 17<sup>th</sup> century B C in Mycenae, Greece which suggests that mankind has been suffering from this disease for at least 4000 years<sup>[1]</sup>. Cholecystectomy is the most commonly performed abdominal operation in the West, with some 60 000 operations performed in England and Wales every year<sup>[2]</sup> at a cost to the National Health Service (NHS) of approximately £60 million<sup>[3]</sup>. However, not all the operations provided an effective cure; in 50% of acalculous diseases, patients complained about the recurrence of the symptoms<sup>[4]</sup>. Therefore, understanding the mechanisms of gallstone diseases is essential for better diagnosis and treatments of these diseases.

The earliest attempts to understand gallstone formation focused on phenomena occurring within the gallbladder. Cholesterol gallstone formation depends upon two conditions: (1) cholesterol crystal nucleation; (2) cholesterol crystal growth. The necessary physical-chemical factor for crystal nucleation or growth is cholesterol super-saturation in bile<sup>[5-8]</sup>. Bile stasis may cause cholesterol super-saturation and allow the formation of cholesterol stones<sup>[9]</sup>. Additional studies have shown that hyper-secretion of gallbladder mucus is also an important factor in gallstone formation by accelerating cholesterol nucleation<sup>[10-12]</sup>. It has also been found that increased glycoproteins in bile precede cholesterol saturation and crystallization<sup>[13]</sup>.

The gallbladder is able to react to the stimulus of eating by contracting and discharging bile into the duodenum.

## Abstract

This paper reviews the progress made in understanding the mechanical behaviour of the biliary system. Gallstones and diseases of the biliary tract affect more than 10% of the adult population. The complications of gallstones, i.e. acute pancreatitis and obstructive jaundice, can be lethal, and patients with acalculous gallbladder pain often pose diagnostic difficulties and undergo repeated ultrasound scans and oral cholecystograms. Moreover, surgery to remove the gallbladder in these patients, in an attempt to relieve the symptoms, gives variable results. Extensive research has been carried out to understand the physiological and pathological functions of the biliary system, but the mechanism of the pathogenesis of gallstones and pain production still remain poorly understood. It is believed that the mechanical factors play an essential role in the mechanisms of the gallstone formation and biliary diseases. However, despite the extensive literature in clinical studies, only limited work has been carried out to study the biliary system from the mechanical point of view. In this paper, we discuss the state of art knowledge of the fluid dynamics of bile flow in the biliary tract, the solid mechanics of the gallbladder and bile ducts, recent mathematical and numerical modelling of the system, and finally the future challenges in the area.

© 2007 The WJG Press. All rights reserved.

**Key words:** Fluid dynamics; Gallstone; Bile flow; Cystic duct; Gallbladder; Soft tissue mechanics; Acalculous biliary pain; Stress; Mechanical factors

Luo X, Li W, Bird N, Chin SB, Hill NA, Johnson AG. On the mechanical behaviour of human biliary systems. *World J*

Currently the gallbladder is regarded as a 'slow pump', where emptying or refilling is concerned; its volume change is related to the pressure inside the gallbladder and its compliance<sup>[14-16]</sup>. This relationship is often assumed to be linear<sup>[14]</sup>, but more recently it has been described as a 'bellows' plus pump, in which emptying and refilling alternates<sup>[9,17]</sup>. Cholecystokinin (CCK), a chemical stimulus, not only causes the gallbladder to contract but also allows the cystic duct<sup>[18]</sup> and sometimes the common bile duct<sup>[19]</sup> to contract. Thus, an injection of CCK is often used to study gallbladder motor function *in vivo*.

Poor gallbladder motor function can lead to abnormal gallbladder emptying and is believed to contribute to bile stasis and hence gallstone formation. Many studies have shown that gallbladder emptying is abnormal in patients with gallstones<sup>[20-31]</sup>. In addition, it has been observed that cystic duct flow resistance is increased before gallstone formation<sup>[32,33]</sup>.

All these studies suggest that the mechanics of the bile duct and flow within it play an important role in bile stasis and gallstone formation. From a mechanical point of view, the biliary system can be considered to be a pump-pipe system, where the gallbladder provides the driving pressure, and the flow rate of the bile going through the ducts depends on the resistance as well as the pressure drop between the gallbladder and the downstream end of the common bile duct. In this sense, gallbladder motor function is closely related to the pressure drop, flow rate and the flow resistance in the biliary system. For a given pressure drop, if the flow resistance of the system is higher, then a smaller volume of bile will be driven out of the gallbladder during emptying. Thus the principal areas of interest are mechanical details, such as flow rate, pressure drop and resistance of the biliary system which are related to the geometry of the gallbladder and the ducts. Bile flow in the biliary system is governed not only by the fluid dynamics but also by the solid mechanics, since it is the interaction between the bile flow and soft tissue deformation which determines the characteristics of the system. In addition, it is important to identify which geometric parameters, material properties, or external stimuli have the most significant influence on the system behaviour. It is the purpose of this paper to review the current studies of the mechanical aspects of the biliary system, and their relationship with gallbladder diseases, in particular, gallstones.

## THE ROLE OF BILE FLUID DYNAMICS

### *Bile rheology*

Bile rheology, the study of bile viscosity, is of interest in any consideration of the mechanics of bile flow, since it contributes directly to the flow resistance in the biliary tract. Experimental measurements showed that the density of gallbladder bile is very close to that of water, i.e. 1000 kg/m<sup>3</sup>, at room temperature<sup>[34]</sup>. However, the viscosity of bile is very different to that of water (which is constant at approximately 1 mPa.s) and it can change significantly in pathological situations.

Bouchier *et al.*<sup>[35]</sup> reported that the dynamic viscosity

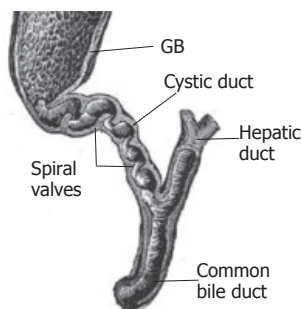
of gallbladder bile is higher than that of hepatic bile and that viscosity is increased in pathological states<sup>[36]</sup>. Doty<sup>[37]</sup> suggested that this was due to the presence of mucus in gallbladders with stones. Jungst *et al.*<sup>[38]</sup> also showed that the viscosity of bile was markedly higher in patients with cholesterol (5.0 mPa.s) and mixed stones (3.5 mPa.s) compared to that of hepatic bile (0.92 mPa.s). He also found a positive correlation between mucin and viscosity in gallbladder bile but not in hepatic bile.

Tera<sup>[39]</sup> found experimentally that normal gallbladder bile formed layers when left to stand. The dynamic viscosity of the top thinnest layer is 2.0 mPa.s, but that of the thickest layer is 2.2 mPa.s after allowing 2 h for sedimentation to take place<sup>[39]</sup>. Gottschalk and Lochner<sup>[40]</sup> measured postoperative bile viscosity, sampled by T-tube drainage of 29 patients with a modified horizontal capillary viscometer, from the day of operation to the 9<sup>th</sup> post-operative day and confirmed that the viscosity changes with time and the bile behaves like a visco-elastic Maxwell fluid (viscous-elastic fluid). Non-Newtonian shear-thinning behaviour was also observed using a Contraves Low Shear viscometer: the bile dynamic viscosity decreased from 5 mPa.s at a shear rate of 0.1 s<sup>-1</sup> to 1.5 mPa.s at 2.0 s<sup>-1</sup><sup>[40]</sup>. Coene *et al.*<sup>[41]</sup> reported that the bile viscosity of patients with gallstones varied as a function of shear rate, and that the bile dynamic viscosity decreased from 2.5 mPa.s at a shear rate of 0.1 s<sup>-1</sup> to 1.5 mPa.s at 100 s<sup>-1</sup>. These observations seem to indicate that the bile in gallbladder with gallstones has shear-thinning non-Newtonian behaviour at low shear rate. Ooi<sup>[34]</sup> measured the dynamic viscosity in fresh bile samples from 59 patients undergoing cholecystectomy and found the dynamic viscosity of gallbladder bile to be between 1.77-8.0 mPa.s for shear rates between 0.5 s<sup>-1</sup>-75 s<sup>-1</sup><sup>[34]</sup>. He discovered that the bile in 20 subjects behaved like a Newtonian fluid, while in 22 subjects it showed shear-thinning at a low shear rate and then shear-thickening at a higher shear rate. In 8 subjects there was shear-thickening, but in 4 other subjects with mucus shear-thinning was observed. In general, the Newtonian bile seemed to be associated with normal subjects. Increased viscosity of gallbladder bile has been considered an important factor in the pathogenesis of gallstone disease<sup>[38]</sup>.

It is clear that the bile viscosity can be subject-dependent even in normal physiological cases. In pathological cases, it can also vary between Newtonian, weakly non-Newtonian and strongly non-Newtonian behaviours. However, for healthy subjects, it may be reasonable to assume that bile is a Newtonian fluid. Indeed, this assumption has been widely used in modelling of cystic ducts<sup>[34,42-44]</sup>.

### *Geometry of biliary duct and flow resistance*

During gallbladder refilling and emptying in response to hormonal and neural stimuli<sup>[45]</sup>, the bile flow passes through the cystic duct which connects the gallbladder and common bile duct, see Figure 1. Observations on the cystic duct anatomy have shown that the duct typically presents a combination of two types of structure: (1) in which the duct lumen wall may present the valve of Heister<sup>[46,47]</sup>; (2) the duct has a smooth lumen which



**Figure 1** The geometry of the biliary tract, where the valves of Heister in the cystic duct are shown.

describes various geometries such as spiral, winding, kinks or spiral incorporating an M-shape loop *etc*<sup>[34,48]</sup>. Different cystic duct structures can significantly affect the pressure drop required to drive the same flow of bile through the system. Structure type (1), for example, offers much more flow resistance compared to type (2).

The relation between the cystic duct geometry and cholelithiasis has been investigated *in vivo*. Based on 250 patients with cholelithiasis and 250 healthy controls, Deenitchin *et al*<sup>[49]</sup> discovered that patients with gallstones have significantly longer and more narrow cystic ducts (of mean length 48 mm and diameter 4 mm) than those without stones (of mean length 28 mm and diameter 7 mm). The results suggest that flow resistance is affected by the cystic duct geometry, and may be associated with cholelithiasis.

Rodkiewicz *et al*<sup>[42]</sup>, on examining the pressure drop across the biliary system of a dog, found that flow rate of bile,  $Q$ , in the biliary system tree (including the sphincter of Oddi) was related to the pressure drop,  $\Delta p$ , by a power law, i.e.  $\Delta p^n \propto Q$ , not the Poiseuille law commonly used for flow in a rigid straight tube which is  $\Delta p \propto Q$ . The power index  $n$  was in the range of 1.47-2.05. On the other hand, they found that the Poiseuille law was approximately valid when the bile flowed along a long, circular, smooth and rigid tube<sup>[42]</sup>, which suggested that dog's bile is more or less a Newtonian fluid.

The key to a more accurate estimation of detailed flow resistance is the reconstruction of the biliary tract for each patient. 2D real-time ultrasonography and HIDA scintigraphy techniques have long been applied in gallbladder volume measurement and diagnosis of cholecystitis<sup>[50-52]</sup>. However, these can only give limited information on the 3D biliary tract. A 3D real-time ultrasonography technique is now being developed and has been applied to the measurement of gallbladder shape and volume<sup>[53]</sup>. The 3D spiral/helical computed tomography (CT) has also been involved in diagnosis of cholecystitis, since it not only shows the 3D images of the gallbladder but also of the whole biliary tract<sup>[54-60]</sup>. These techniques may in the future facilitate the development of specific models for measuring flow resistance.

### Sphincter of Oddi

The sphincter of Oddi is located at the termination of the common bile duct and pancreatic duct. The human sphincter of Oddi segment is 6-15 mm in length and has a muscular structure. The physiological functions of sphincter of Oddi include: (1) regulating bile flow into the

duodenum; (2) diverting hepatic bile into the gallbladder and (3) preventing reflux of duodenal contents from the duodenum into the biliary tree<sup>[61,62]</sup>. When CCK is released, it causes the gallbladder to contract and the sphincter of Oddi to relax allowing bile to empty. Coordination of gallbladder and sphincter of Oddi function may also be influenced by nerve bundles which connect the gallbladder and the sphincter of Oddi *via* the cystic duct<sup>[63,64]</sup>. The effect of enteric hormones on sphincter of Oddi motor function was determined by recording intraluminal pressure<sup>[65]</sup>. It was found that the human sphincter of Oddi demonstrated unique phasic contractions, which would have an important role in regulating biliary and pancreatic duct emptying<sup>[65]</sup>. Several studies on the opossum sphincter of Oddi showed that it regulates bile like a peristaltic pump at low common bile duct pressure and as a resistor at higher common bile duct pressures<sup>[66-68]</sup>. Funch-Jensen *et al*<sup>[69]</sup> observed that the CCK injection inhibited the activity of the sphincter of Oddi of dogs, thus as bile flow increased, the gallbladder pressure remained unchanged. Funch-Jensen<sup>[62]</sup> further argued that the peristaltic pump activity of the human sphincter of Oddi was probably less important since CCK inhibited the phasic wave of the sphincter.

The basal pressure of human sphincter of Oddi is affected by gallstone disease. Cicala *et al*<sup>[70]</sup> investigated motor activity of the sphincter in 155 patients, and found that gallstones are frequently associated with increased basal pressure, which might obstruct bile flow causing gallbladder stasis. The early work on pressure drop and flow resistance across dog biliary duct illustrated that the resistance of sphincter of Oddi is at least about 3 times higher than that of the cystic duct<sup>[71]</sup>. These results suggest the mechanical role for the sphincter of Oddi in the system can be significant. In fact, this may contribute to the reasons that the computational prediction of pressure drop in the cystic duct resistance is much lower than the clinically observed opening pressure during emptying<sup>[34]</sup>.

## THE ROLE OF SOLID MECHANICS

### Mechanical properties of gallbladder muscles

The gallbladder contracts under the control of nervous and hormonal stimuli during the emptying process<sup>[64]</sup>. Contraction of the muscle fibre mesh generates a vector of force directed toward the centre of the gallbladder lumen. To model the muscle changes due to the contraction, a relationship which describes the muscle responses of a system to external forces is required. This important relationship is known as the constitutive relation, which allows us to predict the stress distribution within the muscle. Most of the current mechanical studies on gallbladder muscles have concentrated on the constitutive relations either in the form of the gallbladder volume-pressure relationship, or the length-tension relationship of a muscle strip.

### The pressure-volume relation

The relationship between the volume change  $\Delta V$  and the differential pressure  $\Delta p$  in the gallbladder can be



expressed as  $\Delta V = C\Delta p$  (1), where  $C$  is the compliance of the gallbladder, which can be determined from *in vitro* or *in vivo* experiments.

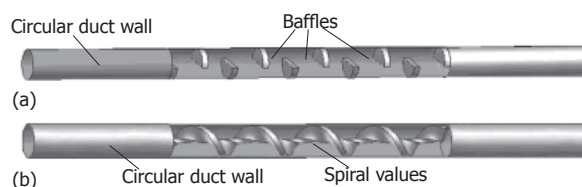
The pressure-volume response of opossum was studied by Ryan and Cohen<sup>[14]</sup> under basal conditions and after a continuous intravenous infusion of gastrin I, secretin, and CCK. It was found that without stimulation, the gallbladder was capable of accommodating a volume increase with only slight changes in pressure whereas CCK significantly increased the pressure in the gallbladder. They found that the gallbladder compliance was about 0.77 mL/mmHg under basal conditions, but decreased to 0.38, and 0.34 mL/mmHg as CCK stimulation increased from 0.025 to 2.5  $\mu\text{g}/\text{kg}\cdot\text{h}$ . Schoetz *et al.*<sup>[15]</sup> measured the dynamic pressure-volume relation of adult female baboons. Their results showed a hysteresis loop in the pressure-volume relation which was exacerbated by CCK stimulation. This suggests that the gallbladder muscle may behave as a visco-elastic material. However, the mean values they measured, with and without stimuli, were very close to that of Ryan and Cohen<sup>[14]</sup>. Middelfart *et al.*<sup>[16]</sup> measured the pressure-volume relationship of the gallbladders in 11 patients with gallstones, in which the gallbladders were injected with saline *via* a McGaham catheter. It was found that the compliance varied from 0.17 to 4.0 mL/mmHg, and was highly subject dependent, with a mean value of about 2.66 mL/mmHg.

### The length-tension relation

Since the gallbladder consists of a layer of smooth muscle, it is subject to both active and passive tensions during emptying. The active tension is generated by hormonal stimuli, and the passive tension is caused by stretch of the muscle. The constitutive equation between the active force and length variation in the gallbladder has been studied in strips of gallbladder using uni-axial experiments. Although the response of the smooth muscle to the hormone should vary with time, currently all studies assumed that the length-tension relation in gallbladder is time-independent.

Mack and Todd<sup>[72]</sup> studied 50 strips from 25 human gallbladders obtained at operation. They found that the human gallbladder muscle was capable of maintained tone *in vitro* and that peak tension could be achieved within 3-5 min following hormonal stimulation. Unfortunately, they did not measure the quantitative relation between length and tension, therefore no constitutive equation for these studies could be established.

Washabau *et al.*<sup>[73]</sup> used gallbladder muscle strips from mature female guinea pigs to measure the isometric stress stimulated with either 10-8 to 10-4M acetyl choline or 10-80 mmol/L KCl stimulations. The passive tension increased with the length ratio  $L/L_0$  (where  $L$  is the deformed length, and  $L_0$  is the initial length). The active tension was found to achieve its maximal value at  $L_0$ , and declined afterward, although the total tension (active + passive) rose with  $L/L_0$ . Bird *et al.*<sup>[74]</sup> measured the tension of muscle strips from human gallbladder removed at cholecystectomy. They found no differences for samples taken from the longitudinal, circular and oblique planes. However, the samples taken from the gallbladder body region contracted more forcefully than those from the



**Figure 2** Two types of the cystic duct models used by Ooi *et al.*<sup>[43]</sup> (modified from Figure 2 in the Journal of Biomechanics, vol 37, page 1913-1922) .

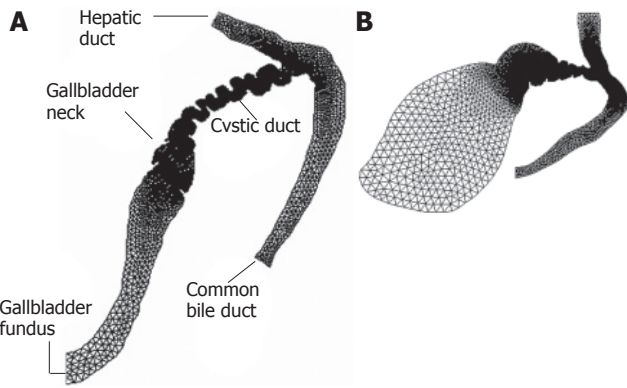
gallbladder neck region. Strips from the body region were also more sensitive to muscarinic stimulation. They did not measure the length-tension relation. Ahmed *et al.*<sup>[75]</sup> compared the response of strips from patients with acalculous biliary pain to those of normal gallbladders following CCK-8 and carbachol stimulation. They found no difference in the CCK responses in these two groups; but again, the group also did not measure the length-tension relation.

### The mechanical properties of bile duct

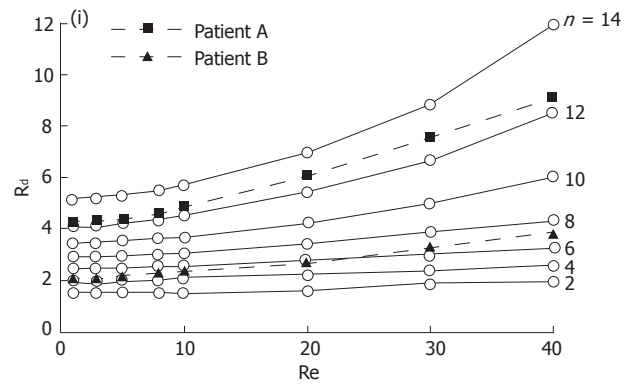
There are no experimental data available for mechanical properties of human biliary ducts at the present time. Most of the measurements on biliary ducts were conducted on animals. Jian and Wang<sup>[76]</sup> measured 16 bile duct systems in healthy adult dogs and found that in normal physiological condition the bile duct experiences an almost uniform circumferential and longitudinal stress. However, in diseased cases the stresses are non-uniform, and much larger at the inside wall than at the outside wall. They also found that the elastic modulus (a material property which represents the ratio of stress to strain in an elastic body) decreases from the common bile duct to the common hepatic duct and is lowest in the hepatic duct. The elastic modulus of the cystic duct is comparable to that of the hepatic duct. Duch *et al.*<sup>[77]</sup> examined 11 pig hepatic and the common bile ducts. They found that the cross-sectional areas in the common bile duct are significantly higher than those of the hepatic duct under a pressure range of 0-8 kPa. In a second study, the structural and mechanical changes were quantified in the common bile duct at different time intervals following experimental acute obstruction<sup>[78]</sup>. In this study, the duct was ligated near the duodenum in pigs, and studied after 3 h, 12 h, 2 d, 8 d and 32 d. It was found that the circumferential stress-strain relation changed with time.

## NUMERICAL AND MATHEMATICAL MODELLING

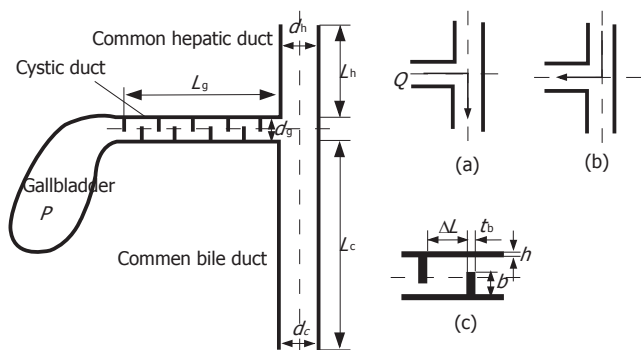
Ooi *et al.*<sup>[34]</sup> studied the effect of the cystic duct geometry on the flow resistance using both two-, and three dimensional cystic duct models. In their numerical study, the cystic duct was modelled as a straight pipe with two types of baffles of different numbers and height (Figure 2). The bile was assumed to be Newtonian, and its viscosity varied between 1-4 mPa.s. The results were then compared with more realistic two-dimensional models based on patient's biliary system images (Figure3). It was found that both the baffle height and number of baffles can



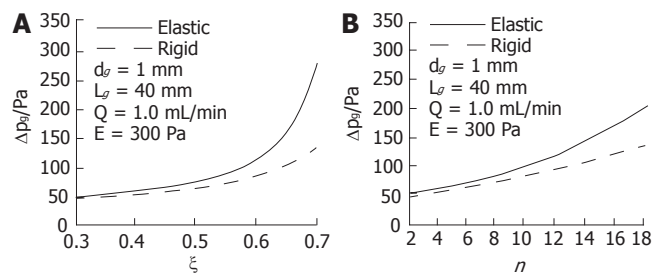
**Figure 3** Computational models built from two patients' biliary system images used by Ooi *et al*<sup>[43]</sup> (modified from Journal of Biomechanics, vol. 37, page 1913-1922, Figure 2). Patient A is reported to have gallstones, and patient B is the normal control.



**Figure 4** The resistance,  $R_d$ , plotted with the Reynolds number,  $Re$  (which is defined as the ratio of inertia over viscous forces, and is proportional to the flow rate for a given duct and bile).  $n$  is the number of the baffles in the duct<sup>[43]</sup> (modified from Journal of Biomechanics, vol. 37, page 1913-1922, Figure 6).



**Figure 5** One-dimensional model of human biliary system and bile flow directions in the (a) emptying and (b) refill phases, (c) details of baffles at one section of the cystic duct<sup>[44]</sup>.  $p$  is the pressure inside the gallbladder, and  $Q$  is the flow rate of bile fluid. (Modified from figure 2 to be published in ASME Journal of Biomechanical Engineering).



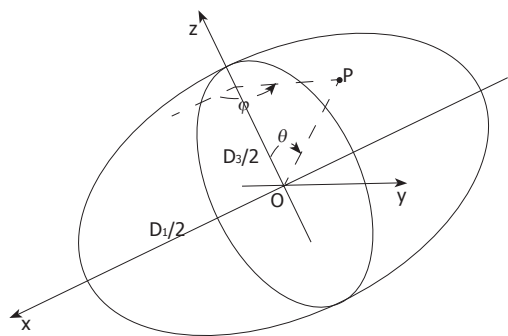
**Figure 6** Pressure loss variations with baffle height ratio (A) and baffle number (B) for both rigid and elastic models<sup>[44]</sup>. (Modified from figure 8 to be published in ASME Journal of Biomechanical Engineering).

significantly affect the flow resistance. In fact, the flow resistance responds to these geometric effects much more than to an increased bile viscosity. Under the same flow conditions, the resistance from the scanned model based on a diseased gallbladder was found to be larger than that of a healthy one (Figure 4).

In an attempt to validate the numerical results by Ooi *et al*<sup>[43]</sup>, Al-Altabi *et al*<sup>[79-81]</sup> performed a series of experimental studies on the flow patterns in a tube with uniform baffles as shown in Figure 2A. In these experiments, the Reynolds number was more than 50, which is much higher than that in the human biliary system (which is usually less than 10). Therefore, only qualitative comparisons between the experiments and the numerical modelling could be made. However, in the higher Reynolds number range, good quantitative agreement between the numerical results from these duct models and the experimental measurements were obtained by Al-Altabi *et al*<sup>[80,81]</sup>. In addition, they discovered that the flow in the duct with baffles presented complicated mixing layers and possibly turbulent flows when the Reynolds number was higher. Based on these findings, a one-dimensional model was put forward to predict the pressure drop for a turbulent flow in the duct model with baffles<sup>[81]</sup>. However, it remains to be shown that these results are

of any relevance to biliary flow which operates at a much lower Reynolds number range.

In all these studies, the cystic duct was studied in isolation, and the duct wall was assumed to be rigid. A further development by Li *et al*<sup>[44]</sup> studied one-dimensional rigid and elastic wall models for the biliary system, including the cystic duct, and the T-junction of the common bile duct and hepatic duct (Figure 5). Cystic ducts with baffles were modelled using the concept of equivalent diameter and length, and can be either rigid or elastic. Both emptying and refilling phases were considered. Using this model, the effects of the geometry, elasticity of cystic duct wall, bile flow rate and viscosity on the pressure drop, were studied in detail. It was found that many factors, including the elastic modulus and bile viscosity, can affect the pressure drop. However, the geometric changes in the cystic duct were still dominant. Among the geometric factors, the baffle height,  $b$ , was found to have more significant effect than the number of baffles, because it caused a greater change in the equivalent diameter and length. The pressure drop also increased with a decrease in the Young's modulus of the cystic duct during emptying, as a more compliant duct tended to collapse at the downstream end, thus narrowing the equivalent diameter further (Figure 6). However, it was also found that a more compliant gallbladder duct gave rise to an area of expansion near the gallbladder neck thus increasing the equivalent diameter, which reduced the



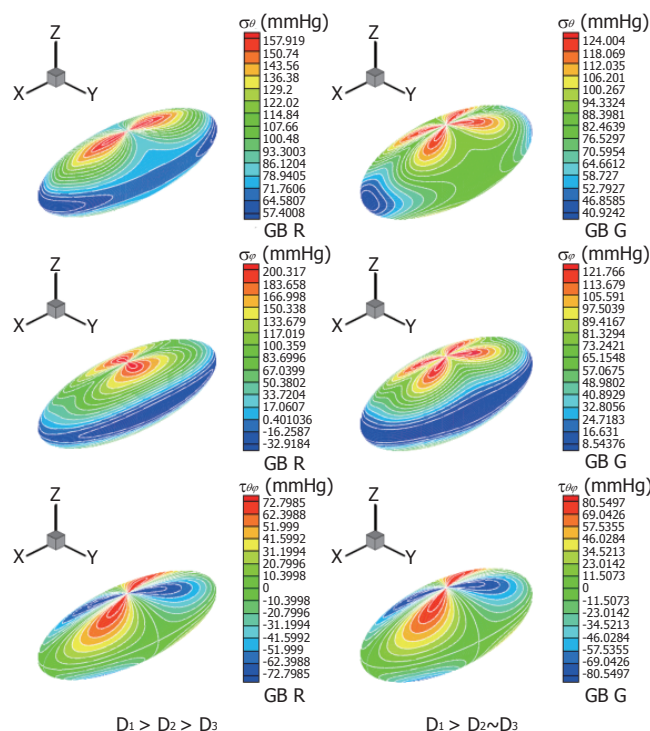
**Figure 7** Gallbladder body shape during emptying is assumed to be ellipsoidal with major and minor axis lengths  $D_1$ ,  $D_2$  and  $D_3$  ( $D_1 > D_2 \geq D_3$ ); the gallbladder is subjected to a uniform internal pressure. The stress due to the pressure at any point P has three components,  $\sigma_\theta$  (meridian),  $\sigma_\phi$  (latitude) and  $\tau_{\theta\phi}$  (in surface)<sup>[85]</sup>.

pressure drop required to drive the bile during emptying. In Li *et al.*<sup>[44]</sup> model, it was found that when the elastic modulus of the cystic duct was more than 700 Pa, the wall deformation became negligible, and a rigid-walled model gave a good estimate of the pressure drop in the system. However, it was noted that the pressure drop in the cystic duct models predicted by both Ooi *et al.*<sup>[34,44]</sup> and Li *et al.*, as well as that from the *in vitro* measurements of Al-Atabi *et al.*<sup>[79,80]</sup>, was much smaller than the clinical observations of the opening pressure during emptying. The reason for this is, at least in part, that the function of the Sphincter of Oddi was not included, and also because the real nature of the bile, the complicated cystic duct geometry, the soft tissue deformation, and their interactions were not fully taken into account.

### CORRELATION OF MECHANICAL FACTORS TO BILIARY PAIN

Acaculous biliary pain or functional biliary pain is defined as steady pain located in the epigastrium and right upper quadrant in the absence of gallstones or when other structural abnormalities exists in the biliary tract<sup>[82]</sup>. However, surgery for this condition is often conducted without any guarantee of relieving the symptoms, so a reliable pain prediction model is needed. Previous attempts to provide an accurate predictor for relief of gallbladder symptoms have not been successful with only about 50% of patients obtaining symptomatic relief following surgery<sup>[83]</sup>. Moreover some patients without stones appear to have typical gallbladder pain, but only half of them gain relief of their pain if the gallbladder is removed. It would therefore be useful to have a way of determining whether the pain is actually arising in the gallbladder, because similar symptoms can be produced by adjacent organs, such as the stomach, duodenum and pancreas, even without obvious disease.

Impaired motor function of gallbladder and sphincter of Oddi have long been suspected as a major factor contributing to gallbladder pain. The presumed mechanism for the pain is obstruction leading to distension and inflammation. The obstruction might result from a lack of co-ordination between the gallbladder and either the



**Figure 8** Li *et al.*<sup>[85]</sup> calculated the stress distributions for two different subjects: R (left) and G (right). The top frame is the principal meridian stress,  $\sigma_\theta$ , the middle frame is the principal latitude stress,  $\sigma_\phi$ , and the bottom one is the in-plane shear stress  $\tau_{\theta\phi}$ . It is seen that the location and the maximum stresses change as the ratio of the lengths of the three axes change.

cystic duct or the sphincter of Oddi due to increased flow resistance or tone<sup>[84]</sup>. In other words, pain may be produced by contraction against resistance or stretch of the gallbladder wall. When the gallbladder is inflamed, artificial distension produces typical pain<sup>[62]</sup>.

Preliminary work has been carried out to identify the correlation between possible mechanical factors to biliary pain<sup>[85]</sup>. Li *et al.*<sup>[44,86]</sup> developed a mathematical model for the human biliary system during the emptying phase, based on a clinical test in which gallbladder volume changes are measured in response to a standard stimulus and a recorded pain profile. In their model the gallbladder was assumed to be a thin-walled ellipsoid under uniform pressure (Figure 7), where the three axis lengths can be estimated from the *in vivo* volume measurements. Using this information, together with the constitutive equation (1), choosing the compliance  $C$  to be 2.731 mL/mmHg<sup>[87]</sup>, they predicted the flow resistance,  $R$ , in the biliary ducts using a Windkessel model<sup>[88]</sup>:

$$C \frac{dP}{dt} + \frac{P - P_d}{R} = 0, \quad (2)$$

where  $P_d$  is the pressure at the downstream end of the tract. The detailed stress distributions in the gallbladder wall during emptying for different gallbladder geometries were also calculated analytically (Figure 8). This model was then applied to clinical data from CCK provocation tests from 25 patients. It was found that the pressure change in the gallbladder, the gallbladder ejection fraction and the shape change are all contributing to, but not solely responsible for the pain. However, the maximum stress in the gallbladder,  $\sigma_{max}$ , is singled out to be the only factor



closely correlated with gallbladder pain. In fact, using the simple criterion that the maximum stress  $\sigma_{\max} > 200$  mmHg, 76% of the model predictions for pain agreed with the clinical results<sup>[44]</sup>. However further research is required to confirm the stress-pain relationship, and to validate and improve the model.

## FUTURE CHALLENGES

### **Patient-specific prediction of flow resistance**

Current studies show that geometry changes in the biliary system play the dominant role in controlling bile flow and pressure drop. Further modelling work on 3D models of the biliary system is clearly required to help identify the key geometrical parameters.

In addition, if any prediction of flow resistance is to be used in clinical diagnosis, the model clearly needs to be patient-specific. The key to predicting patient specific flow features relies on obtaining the realistic geometry of the biliary system. This will involve three-dimensional geometrical reconstructions of the biliary system during emptying. Therefore, techniques for the reconstructions based on non-invasive clinical measurements need to be developed.

### **Bile rheology**

It has been found that the bile can demonstrate non-Newtonian behaviour at low shear rates, but its relation with gallstone formation is not understood. Experiments on bile's viscosity can be contradictory and it seems that the bile property is not only subject dependent, but also pathologically dependent. In other words, it changes with the status of bile concentration and with tiny stones (crystals) forming, and the collective behaviour is controlled by the resulting two-phase flow. More experimental and modelling work are required to understand the bile rheology before we can estimate the flow details more accurately; this is especially true if the measurement to be patient specific.

The constitutive equations for the gallbladder (and biliary tract) are still to be established even for a healthy subject. Currently, only limited information on the volume-pressure relation of the gallbladder and the length-tension relation for single muscle strips, are available. More experimental work is required to identify the mechanical properties both for healthy and diseased gallbladders. The lack of data on the mechanical properties makes it impossible to build a quantitatively reliable mathematical or numerical model to deal with the contraction and emptying activity of the human gallbladder. The biliary system also presents active contraction under chemical stimulations such as CCK. For instance, the gallbladder, the sphincter of Oddi, and even the cystic duct are reported to have this activity<sup>[89]</sup>. Needless to say, studying the active smooth muscle behaviour and its response to chemical stimulations during physiological and pathological gallbladder emptying poses an exciting challenge at the next level, both for experimentalists and biomechanics modellers.

### **Fluid-structure interactions**

Fluid-structure interactions add to the complications when

attempting to describe the behaviour of the biliary system. To date, only limited work has been carried out on the fluid structure interactions. Ooi *et al*<sup>[90]</sup> simulated the bile flow in a simple two-dimensional elastic cystic duct model, and the nature of the fluid-structure interactions was only crudely modelled in a one-dimensional model<sup>[44]</sup>. No work on the fluid-structure interactions in a three-dimensional model has been reported. However, it is the fluid-structure interactions in the biliary system that provide the crucial link between chemical stimuli and mechanical response in the biliary systems, since these chemical stimuli changes the tissue structure, hence the geometry and the elastic modulus, which in turn change the flow resistance and stresses in the system.

### **Prediction of the biliary pain**

To date, only preliminary work has been carried out on the link between biliary pain and levels of stress within the system<sup>[44,86]</sup>. More work is required to confirm a positive correlation between the stress and biliary pain. Although the study by Li *et al*<sup>[86]</sup> considered both the active and the passive stresses, the active stress was not obtained from modelling of the smooth muscle mechanics; rather, it assumed a same generic form for all subjects. In practice, this will vary between individuals and in pathological situations.

## DISCUSSION

The fluid dynamics in the human biliary system depend on the gallbladder motor function, biliary tract geometry, the smooth muscle activity, bile rheology and their interactions. These mechanical factors play important roles in the normal functions of the biliary systems and may help us to understand the nature and origin of 'gallbladder pain'. There have been extensive clinical and experimental work both on human and animal biliary systems, however, only few modelling and numerical studies have been carried out to study the system from the mechanical point of view. This paper has reviewed the current progress in understanding the mechanical aspects of the biliary system, and covered the areas in bile fluid dynamics, bile rheology, gallbladder and duct tissue mechanics, mathematical and numerical modelling, and the correlations between the mechanical stresses and the gallbladder. The preliminary work reported here represents a significant step forward towards understanding the origins of gallbladder pain and gallstone disease.

## REFERENCES

- 1 Sandor J, Sandor A, Zaborszky A, Megyaszai S, Benedek G, Szeberin Z. Why laparoscopic cholecystectomy today? *Surg Today* 1996; **26**: 556-560
- 2 Lam CM, Murray FE, Cuschieri A. Increased cholecystectomy rate after the introduction of laparoscopic cholecystectomy in Scotland. *Gut* 1996; **38**: 282-284
- 3 Calvert NW, Troy GP, Johnson AG. Laparoscopic cholecystectomy: a good buy? A cost comparison with small-incision (mini) cholecystectomy. *Eur J Surg* 2000; **166**: 782-786
- 4 Smythe A, Majeed AW, Fitzhenry M, Johnson AG. A requiem for the cholecystokinin provocation test? *Gut* 1998; **43**: 571-574

- 5 **Brenneman DE**, Connor WE, Forker EL, DenBesten L. The formation of abnormal bile and cholesterol gallstones from dietary cholesterol in the prairie dog. *J Clin Invest* 1972; **51**: 1495-1503
- 6 **Holzbach RT**, Marsh M, Olszewski M, Holan K. Cholesterol solubility in bile. Evidence that supersaturated bile is frequent in healthy man. *J Clin Invest* 1973; **52**: 1467-1479
- 7 **Holzbach RT**. Effects of gallbladder function on human bile: compositional and structural changes. *Hepatology* 1984; **4**: 57S-60S
- 8 **Holzbach RT**. Factors influencing cholesterol nucleation in bile. *Hepatology* 1984; **4**: 173S-176S
- 9 **Jazrawi RP**, Pazzi P, Petroni ML, Ahmed HA, Northfield TC. Role of the gallbladder in the pathogenesis of gallstone disease. In: Northfield TC, Ahmed HA, Jazrawi RP. *Bile Acid in Hepatology Disease*. Boston: Kuwer Academic Publishers, 2000: 182-191
- 10 **Doty JE**, Pitt HA, Kuchenbecker SL, DenBesten L. Impaired gallbladder emptying before gallstone formation in the prairie dog. *Gastroenterology* 1983; **85**: 168-174
- 11 **Levy PF**, Smith BF, LaMont JT. Human gallbladder mucin accelerates nucleation of cholesterol in artificial bile. *Gastroenterology* 1984; **87**: 270-275
- 12 **LaMont JT**, Smith BF, Moore JR. Role of gallbladder mucin in pathophysiology of gallstones. *Hepatology* 1984; **4**: 51S-56S
- 13 **Zak RA**, Frenkiel PG, Marks JW, Bonorris GG, Allen A, Schoenfield LJ. Cyclic nucleotides and glycoproteins during formation of cholesterol gallstones in prairie dogs. *Gastroenterology* 1984; **87**: 263-269
- 14 **Ryan J**, Cohen S. Gallbladder pressure-volume response to gastrointestinal hormones. *Am J Physiol* 1976; **230**: 1461-1465
- 15 **Schoetz DJ Jr**, LaMorte WW, Wise WE, Birkett DH, Williams LF Jr. Mechanical properties of primate gallbladder: description by a dynamic method. *Am J Physiol* 1981; **241**: G376-G381
- 16 **Middelfart HV**, Jensen P, Hojgaard L, Funch-Jensen P. Pain patterns after distension of the gallbladder in patients with acute cholecystitis. *Scand J Gastroenterol* 1998; **33**: 982-987
- 17 **Lanzini A**, Northfield TC. Gallbladder motor function in man. In: *Bile Acid in Hepatology Disease*. Northfield TC, Ahmed HA, Jazrawi RP. Boston: Kuwer Academic Publishers, 1998: 83-96
- 18 **Courtney DF**, Clanachan AS, Scott GW. Cholecystokinin constricts the canine cystic duct. *Gastroenterology* 1983; **85**: 1154-1159
- 19 **Severi C**, Grider JR, Makhlof GM. Functional gradients in muscle cells isolated from gallbladder, cystic duct, and common bile duct. *Am J Physiol* 1988; **255**: G647-G652
- 20 **Shaffer EA**, McOrmond P, Duggan H. Quantitative choleoscintigraphy: assessment of gallbladder filling and emptying and duodenogastric reflux. *Gastroenterology* 1980; **79**: 899-906
- 21 **Thompson JC**, Fried GM, Ogden WD, Fagan CJ, Inoue K, Wiener I, Watson LC. Correlation between release of cholecystokinin and contraction of the gallbladder in patients with gallstones. *Ann Surg* 1982; **195**: 670-676
- 22 **Fisher RS**, Stelzer F, Rock E, Malmud LS. Abnormal gallbladder emptying in patients with gallstones. *Dig Dis Sci* 1982; **27**: 1019-1024
- 23 **Forgacs IC**, Maisey MN, Murphy GM, Dowling RH. Influence of gallstones and ursodeoxycholic acid therapy on gallbladder emptying. *Gastroenterology* 1984; **87**: 299-307
- 24 **Pomeranz IS**, Shaffer EA. Abnormal gallbladder emptying in a subgroup of patients with gallstones. *Gastroenterology* 1985; **88**: 787-791
- 25 **Portincasa P**, Di Ciaula A, Baldassarre G, Palmieri V, Gentile A, Cimmino A, Palasciano G. Gallbladder motor function in gallstone patients: sonographic and in vitro studies on the role of gallstones, smooth muscle function and gallbladder wall inflammation. *J Hepatol* 1994; **21**: 430-440
- 26 **Portincasa P**, Di Ciaula A, Palmieri V, Velardi A, VanBerge-Henegouwen GP, Palasciano G. Impaired gallbladder and gastric motility and pathological gastro-oesophageal reflux in gallstone patients. *Eur J Clin Invest* 1997; **27**: 653-661
- 27 **Sylwestrowicz TA**, Shaffer EA. Gallbladder function during gallstone dissolution. Effect of bile acid therapy in patients with gallstones. *Gastroenterology* 1988; **95**: 740-748
- 28 **Van Erpecum KJ**, van Berge Henegouwen GP, Stolk MF, Hopman WP, Jansen JB, Lamers CB. Fasting gallbladder volume, postprandial emptying and cholecystokinin release in gallstone patients and normal subjects. *J Hepatol* 1992; **14**: 194-202
- 29 **Spengler U**, Sackmann M, Sauerbruch T, Holl J, Paumgartner G. Gallbladder motility before and after extracorporeal shock-wave lithotripsy. *Gastroenterology* 1989; **96**: 860-863
- 30 **Masclee AA**, Jansen JB, Driessen WM, Geuskens LM, Lamers CB. Plasma cholecystokinin and gallbladder responses to intraduodenal fat in gallstone patients. *Dig Dis Sci* 1989; **34**: 353-359
- 31 **Festi D**, Frabboni R, Bazzoli F, Sangermano A, Ronchi M, Rossi L, Parini P, Orsini M, Primerano AM, Mazzella G. Gallbladder motility in cholesterol gallstone disease. Effect of ursodeoxycholic acid administration and gallstone dissolution. *Gastroenterology* 1990; **99**: 1779-1785
- 32 **Pitt HA**, Roslyn JJ, Kuchenbecker SL, Doty JE, Denbesten L. The role of cystic duct resistance in the pathogenesis of cholesterol gallstones. *J Surg Res* 1981; **30**: 508-514
- 33 **Pitt HA**, Doty JE, DenBesten L, Kuchenbecker SL. Stasis before gallstone formation: altered gallbladder compliance or cystic duct resistance? *Am J Surg* 1982; **143**: 144-149
- 34 **Ooi RC**. The flow of bile in human cystic duct. PhD Thesis. UK: Department of Mechanical Engineering, University of Sheffield; 2004
- 35 **Bouchier IA**, Cooperband SR, el-Kodsi BM. Mucous substances and viscosity of normal and pathological human bile. *Gastroenterology* 1965; **49**: 343-353
- 36 **Cowie AG**, Sutor DJ. Viscosity and osmolality of abnormal biles. *Digestion* 1975; **13**: 312-315
- 37 **Doty JE**, Pitt HA, Kuchenbecker SL, Porter-Fink V, DenBesten LW. Role of gallbladder mucus in the pathogenesis of cholesterol gallstones. *Am J Surg* 1983; **145**: 54-61
- 38 **Jungst D**, Niemeyer A, Muller I, Zundt B, Meyer G, Wilhelmi M, del Pozo R. Mucin and phospholipids determine viscosity of gallbladder bile in patients with gallstones. *World J Gastroenterol* 2001; **7**: 203-207
- 39 **Tera H**. Sedimentation of bile constituents. *Ann Surg* 1963; **157**: 468-472
- 40 **Gottschalk M**, Lochner A. Behavior of postoperative viscosity of bile fluid from T-drainage. A contribution to cholelithogenesis. *Gastroenterol J* 1990; **50**: 65-67
- 41 **Coene PP**, Groen AK, Davids PH, Hardeman M, Tytgat GN, Huibregtse K. Bile viscosity in patients with biliary drainage. Effect of co-trimoxazole and N-acetylcysteine and role in stent clogging. *Scand J Gastroenterol* 1994; **29**: 757-763
- 42 **Rodkiewicz CM**, Otto WJ, Scott GW. Empirical relationships for the flow of bile. *J Biomech* 1979; **12**: 411-413
- 43 **Ooi RC**, Luo XY, Chin SB, Johnson AG, Bird NC. The flow of bile in the human cystic duct. *J Biomech* 2004; **37**: 1913-1922
- 44 **Li WG**, Luo XY, Johnson AG, Hill NA, Bird NC, Chin SB. One-Dimensional models of the human biliary system. *ASME J Biomechanical Engineering* 2007; in press
- 45 **Dasgupta D**, Stringer MD. Cystic duct and Heister's &quot;valves&quot;. *Clin Anat* 2005; **18**: 81-87
- 46 **Johnston CG**, Brown CE. Studies of gall-bladder function. American Physiological Society, 1932: 477-485
- 47 **Lichtenstein ME**, Ivy AC. The function of the "Valve" of Heister. *Surgery* 1937; **1**: 38-52
- 48 **Bird NC**, Ooi RC, Luo XY, Chin SB, Johnson AG. Investigation of the functional three-dimensional anatomy of the human cystic duct: a single helix? *Clin Anat* 2006; **19**: 528-534
- 49 **Deenitchin GP**, Yoshida J, Chijiwa K, Tanaka M. Complex cystic duct is associated with cholelithiasis. *HPB Surg* 1998; **11**: 33-37
- 50 **Everson GT**, Braverman DZ, Johnson ML, Kern F Jr. A critical evaluation of real-time ultrasonography for the study of



- gallbladder volume and contraction. *Gastroenterology* 1980; **79**: 40-46
- 51 **Dodds WJ**, Groh WJ, Darweesh RM, Lawson TL, Kishk SM, Kern MK. Sonographic measurement of gallbladder volume. *AJR Am J Roentgenol* 1985; **145**: 1009-1011
- 52 **Gill PT**, Dillon E, Leahy AL, Reeder A, Peel AL. Ultrasonography, HIDA scintigraphy or both in the diagnosis of acute cholecystitis? *Br J Surg* 1985; **72**: 267-268
- 53 **Rohling RN**, Gee AH, Berman L. Automatic registration of 3-D ultrasound images. *Ultrasound Med Biol* 1998; **24**: 841-854
- 54 **Kwon AH**, Uetsuji S, Yamada O, Inoue T, Kamiyama Y, Boku T. Three-dimensional reconstruction of the biliary tract using spiral computed tomography. *Br J Surg* 1995; **82**: 260-263
- 55 **Polkowski M**, Palucki J, Regula J, Tilszer A, Butruk E. Helical computed tomographic cholangiography versus endosonography for suspected bile duct stones: a prospective blinded study in non-jaundiced patients. *Gut* 1999; **45**: 744-749
- 56 **Caoli EM**, Paulson EK, Heyneman LE, Branch MS, Eubanks WS, Nelson RC. Helical CT cholangiography with three-dimensional volume rendering using an oral biliary contrast agent: feasibility of a novel technique. *AJR Am J Roentgenol* 2000; **174**: 487-492
- 57 **Chopra S**, Chintapalli KN, Ramakrishna K, Rhim H, Dodd GD 3rd. Helical CT cholangiography with oral cholecystographic contrast material. *Radiology* 2000; **214**: 596-601
- 58 **Hirao K**, Miyazaki A, Fujimoto T, Isomoto I, Hayashi K. Evaluation of aberrant bile ducts before laparoscopic cholecystectomy: helical CT cholangiography versus MR cholangiography. *AJR Am J Roentgenol* 2000; **175**: 713-720
- 59 **Ichii H**, Takada M, Kashiwagi R, Sakane M, Tabata F, Ku Y, Fujimori T, Kuroda Y. Three-dimensional reconstruction of biliary tract using spiral computed tomography for laparoscopic cholecystectomy. *World J Surg* 2002; **26**: 608-611
- 60 **Persson A**, Dahlstrom N, Smedby O, Brismar TB. Volume rendering of three-dimensional drip infusion CT cholangiography in patients with suspected obstructive biliary disease: a retrospective study. *Br J Radiol* 2005; **78**: 1078-1085
- 61 **Dodds WJ**, Hogan WJ, Green JE, Motility of the biliary system. In: Schultz SG. Handbook of Physiology: the gastrointestinal system, Vol. 1, Section 6, Part 2(28). Bethesda: American Physiological Society, 1989: 1055-1101
- 62 **Funch-Jensen P**, Ebehoj N. Sphincter of Oddi motility. *Scand J Gastroenterol Suppl* 1996; **216**: 46-51
- 63 **Luman W**, Williams AJ, Pryde A, Smith GD, Nixon SJ, Heading RC, Palmer KR. Influence of cholecystectomy on sphincter of Oddi motility. *Gut* 1997; **41**: 371-374
- 64 **Mawe GM**. Nerves and Hormones Interact to Control Gallbladder Function. *News Physiol Sci* 1998; **13**: 84-90
- 65 **Geenen JE**, Hogan WJ, Dodds WJ, Stewart ET, Arndorfer RC. Intraluminal pressure recording from the human sphincter of Oddi. *Gastroenterology* 1980; **78**: 317-324
- 66 **Toouli J**, Dodds WJ, Honda R, Sarna S, Hogan WJ, Komarowski RA, Linehan JH, Arndorfer RC. Motor function of the opossum sphincter of Oddi. *J Clin Invest* 1983; **71**: 208-220
- 67 **Calabuig R**, Ulrich-Baker MG, Moody FG, Weems WA. The propulsive behavior of the opossum sphincter of Oddi. *Am J Physiol* 1990; **258**: G138-G142
- 68 **Grivell MB**, Woods CM, Grivell AR, Neild TO, Craig AG, Toouli J, Saccone GT. The possum sphincter of Oddi pumps or resists flow depending on common bile duct pressure: a multilumen manometry study. *J Physiol* 2004; **558**: 611-622
- 69 **Funch-Jensen P**, Stodkilde-Jorgensen H, Kraglund K, Lovgreen NA. Biliary manometry in dogs. Influence of selective electrostimulation of the right and left vagus nerves. *Digestion* 1981; **22**: 89-93
- 70 **Cicala M**, Habib FI, Fiocca F, Pallotta N, Corazziari E. Increased sphincter of Oddi basal pressure in patients affected by gall stone disease: a role for biliary stasis and colicky pain? *Gut* 2001; **48**: 414-417
- 71 **Otto WJ**, Scott GW, Rodkiewicz CM. A comparison of resistances to flow through the cystic duct and the sphincter of Oddi. *J Surg Res* 1979; **27**: 68-72
- 72 **Mack AJ**, Todd JK. A study of human gall bladder muscle in vitro. *Gut* 1968; **9**: 546-549
- 73 **Washabau RJ**, Wang MB, Dorst CL, Ryan JP. Effect of muscle length on isometric stress and myosin light chain phosphorylation in gallbladder smooth muscle. *Am J Physiol* 1991; **260**: G920-G924
- 74 **Bird NC**, Wegstapel H, Chess-Williams R, Johnson AG. In vitro contractility of stimulated and non-stimulated human gallbladder muscle. *Neurogastroenterol Motil* 1996; **8**: 63-68
- 75 **Ahmed R**, Bird NC, Chess-Williams R, Thomas WE, Johnson AG. In vitro responses of gallbladder muscle from patients with acalculous biliary pain. *Digestion* 2000; **61**: 140-144
- 76 **Jian C**, Wang G. Biomechanical study of the bile duct system outside the liver. *Biomed Mater Eng* 1991; **1**: 105-113
- 77 **Duch BU**, Petersen JA, Gregersen H. Luminal cross-sectional area and tension-strain relation of the porcine bile duct. *Neurogastroenterol Motil* 1998; **10**: 203-209
- 78 **Duch BU**, Andersen HL, Smith J, Kassab GS, Gregersen H. Structural and mechanical remodelling of the common bile duct after obstruction. *Neurogastroenterol Motil* 2002; **14**: 111-122
- 79 **Al-Atabi M**, Chin SB, Luo XY. Flow structure in circular tubes with segmental baffles. *J Flow Vis Image Proc* 2005; **3**: 301-311
- 80 **Al-Atabi M**, Chin SB, Luo XY. Visualization Experiment of Flow Structures inside Two-Dimensional Human Biliary System Models. *J Mech Med Biol* 2006; **6**: 249-260
- 81 **Al-Atabi M**, Sulaiman Al-Zuhair, Chin SB and Luo XY. Pressure drop in laminar and turbulent flows in circular pipe with baffles-An experimental and analytic study. *Inter J Fluid Mech Res* 2006; **33**: 303-319
- 82 **Shaffer E**. Acalculous biliary pain: new concepts for an old entity. *Dig Liver Dis* 2003; **35** Suppl 3: S20-S25
- 83 **Smythe A**, Ahmed R, Fitzhenry M, Johnson AG, Majeed AW. Bethanechol provocation testing does not predict symptom relief after cholecystectomy for acalculous biliary pain. *Dig Liver Dis* 2004; **36**: 682-686
- 84 **Corazziari E**, Shaffer EA, Hogan WJ, Sherman S, Toouli J. Functional disorders of the biliary tract and pancreas. *Gut* 1999; **45** Suppl 2: II 48-II 54
- 85 **Liao D**, Duch B U, SrodkildeJorgensen H, Zeng Y J, Gregersen H and Kassab G S, Tension and stress calculations in 3-D Fourier model of gallbladder geometry obtained from MR images. *Ann Biomed Eng* 2004, **32**, 744-755
- 86 **Li W G**, The mechanical behaviour of human biliary system, PhD thesis, University of Sheffield, 2007
- 87 **Ness TJ**, Gebhart GF. Visceral pain: a review of experimental studies. *Pain* 1990; **41**: 167-234
- 88 **Fung YC**, Biomechanics, mechanical properties of living tissues. 2nd ed. New York: Springer, 1984
- 89 **Scott GW**, Otto WJ, Rodkiewicz CM. Resistance and sphincter-like properties of the cystic duct. *Surg Gynecol Obstet* 1979; **149**: 177-182
- 90 **Ooi RC**, Luo XY, Chin SB, Johnson AG, Bird NC. Fluid-structure-interaction (FSI) simulation of the human cystic duct. Summer Bioengineering Conference; 2003 Jun 25-29; Florida

S- Editor Liu Y L-Editor Alpini GD E- Editor Chin GJ